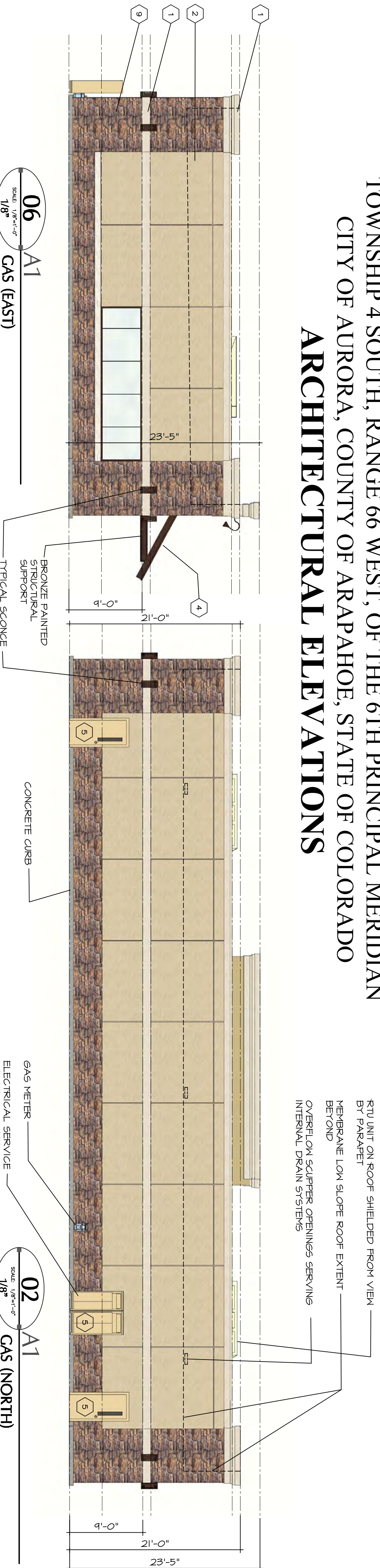


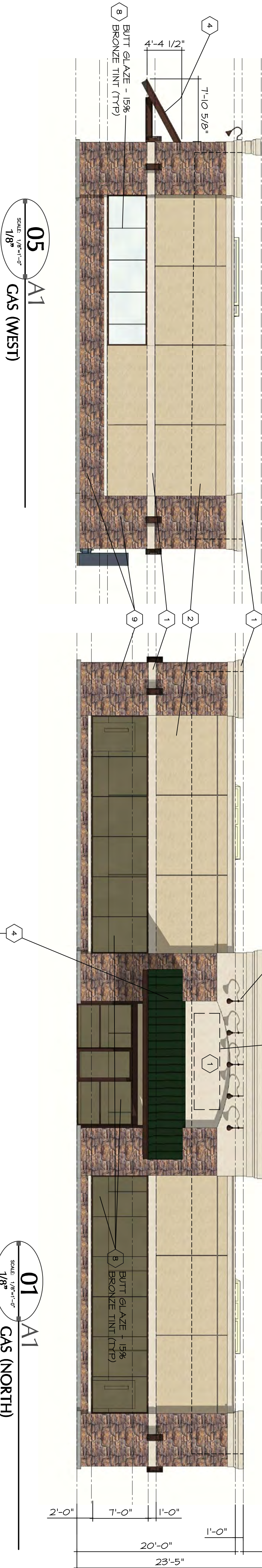
A PARCEL IN THE NORTHEAST QUARTER OF SECTION 24  
TOWNSHIP 4 SOUTH, RANGE 66 WEST, OF THE 6TH PRINCIPAL MERIDIAN  
CITY OF AURORA, COUNTY OF ARAPAHOE, STATE OF COLORADO

**ARCHITECTURAL ELEVATIONS**

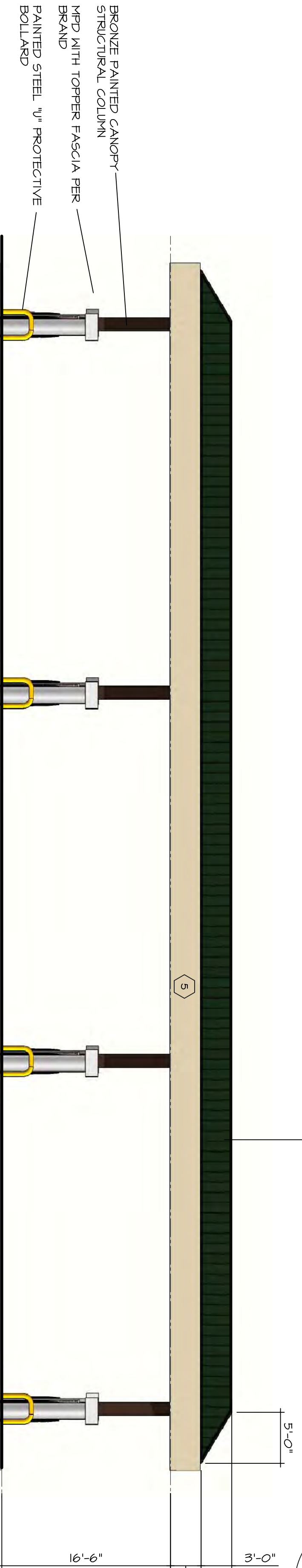


BRONZE PAINTED RAIL  
LIGHTING AS SELECTED

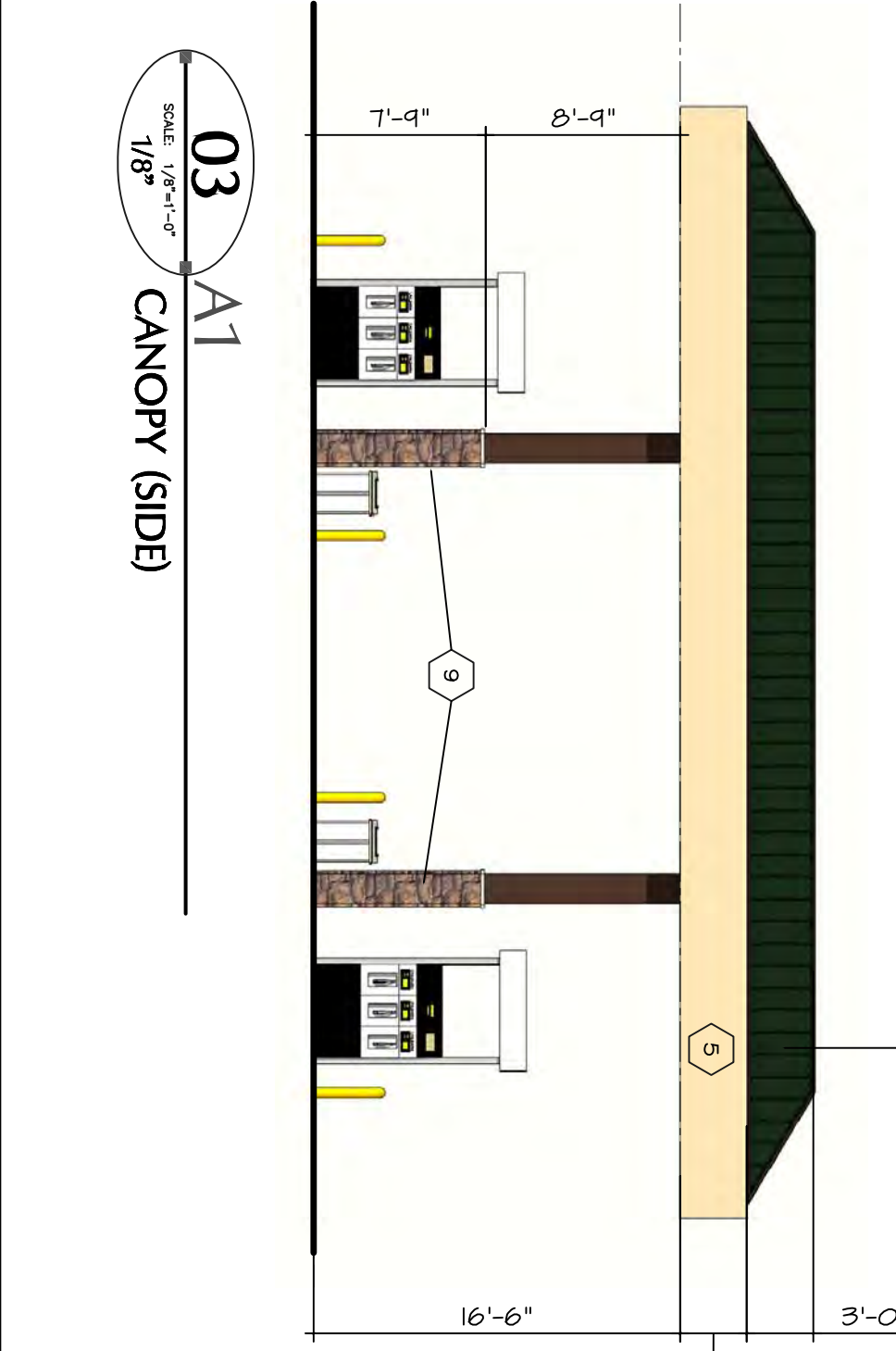
CABINETS - PAINT TO  
MATCH WALL  
SIGN VIA SEPARATE  
PERMIT



01 A1  
SCALE: 1/8"=1'-0"  
1/8"  
GAS (NORTH)



04 A1  
SCALE: 1/8"=1'-0"  
1/8"



8	STONE/NO MI	
9	STONE VENEER	
10	METALS	

## Materials Selection

**H | a | d | c**

**HOOER ARCHITECTURAL  
DESIGN CONSULTANTS, INC.**  
www.hadco.com

**POB 489     Parkhurst Co. Sports  
304646279 Pl     202323794 Rr**

**DATE:**                      02 /03 /2011

**JOB NO.:**                      10.68

**DRAWN BY:**                      RH

**APPROVED:** \_\_\_\_\_

**CADD FILE:** \_\_\_\_\_

NO.	REVISION	DATE	BY

MURPHY CREEK COMMERCIAL  
FILING NO. 1  
ARCHITECTURAL  
ELEVATIONS



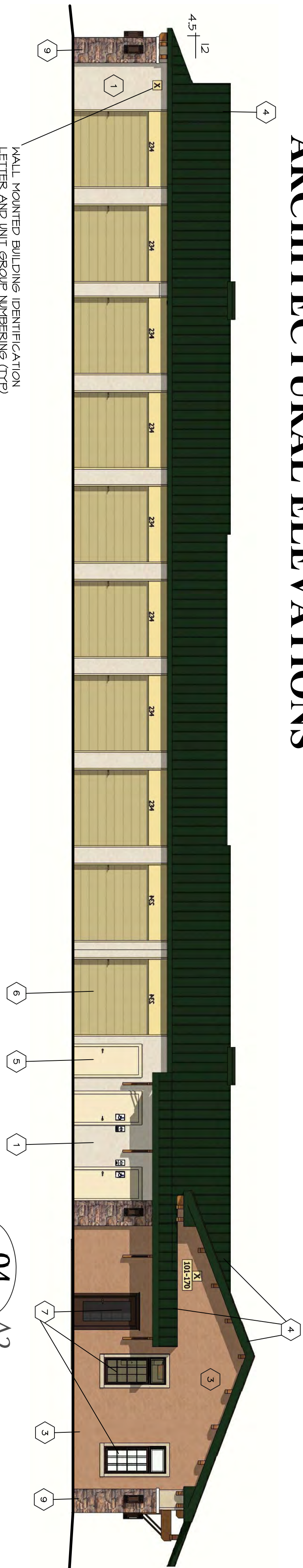
MURPHY CREEK COMMERCIAL FILING NO. 1

A PARCEL IN THE NORTHEAST QUARTER OF SECTION 24  
TOWNSHIP 4 SOUTH, RANGE 66 WEST, OF THE 6TH PRINCIPAL MERIDIAN  
CITY OF AURORA, COUNTY OF ARAPAHOE, STATE OF COLORADO

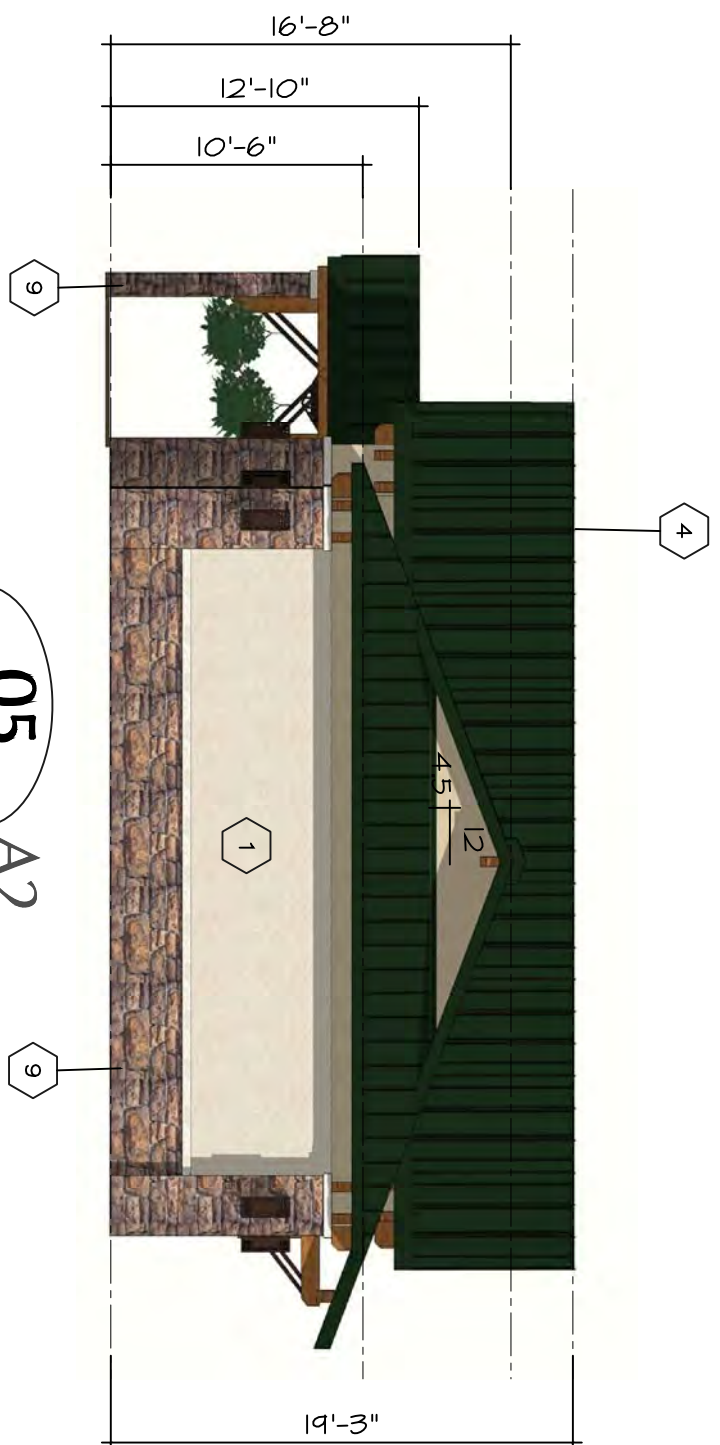
ARCHITECTURAL ELEVATIONS



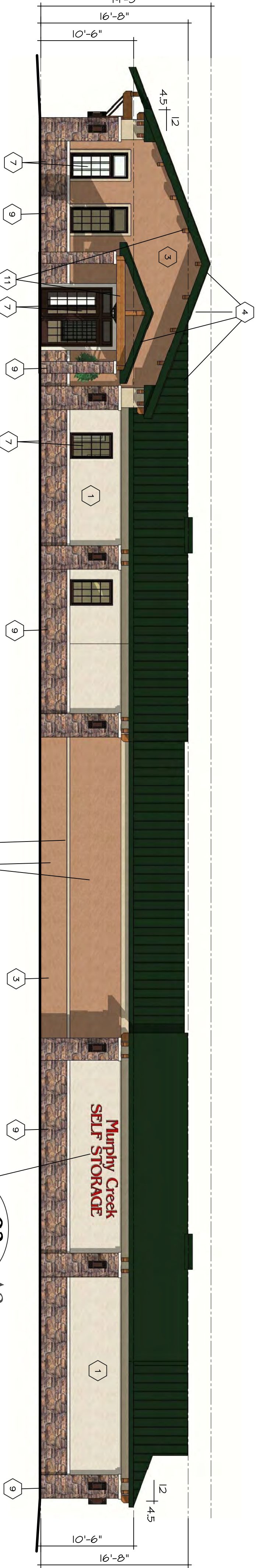
06 A2  
3/16" = 1'-0"  
BUILDING 1 (SOUTH)



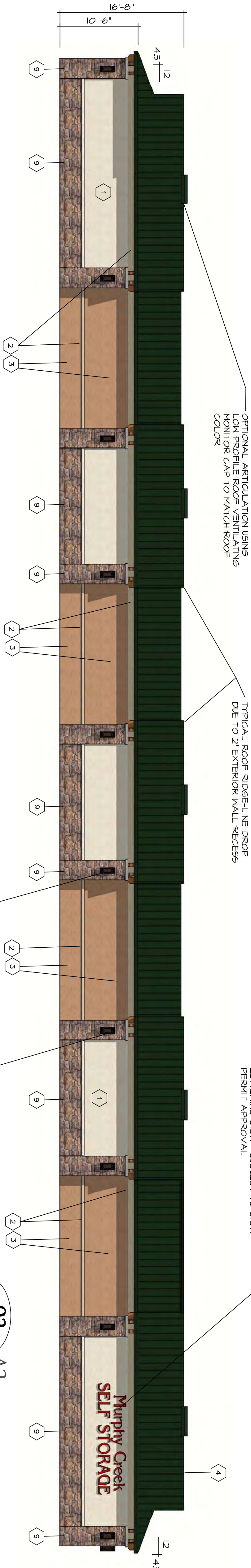
04 A2  
SCALE: 1/8" = 1'-0"  
BUILDING 1 (WEST)



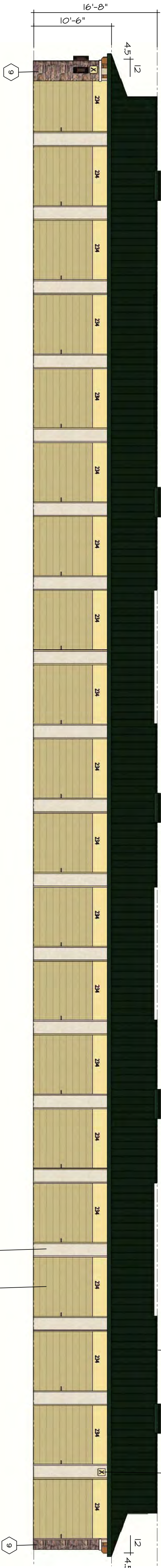
05 A2  
SCALE: 1/8" = 1'-0"  
BUILDING 1 (NORTH)



03 A2  
SCALE: 1/8" = 1'-0"  
BUILDING 1 (EAST)



02 A2  
SCALE: 1/8" = 1'-0"  
BUILDING 8 (WEST)



01 A2  
SCALE: 1/8" = 1'-0"  
BUILDING 8 (EAST)

NO.	REVISION	DATE	BY

MURPHY CREEK COMMERCIAL  
FILING NO. 1  
ARCHITECTURAL  
ELEVATIONS

DEVELOPER  
MURPHY CREEK STORAGE, LLC.  
30 CHERRY HILLS FARM DRIVE  
ENGLEWOOD, CO 80110  
303-761-3667  
303-762-0390 (FAX)  
CONTACT: HARVEY ALPERT

Peak  
and Consultants  
200 W. HAMDEN AVE., SUITE 200  
ENGLEWOOD, COLORADO 80110  
PH: 720.855.3869  
FAX: 720.855.3860  
CONTACT: JEFF FRENCH

HOOPER ARCHITECTURAL  
DESIGN CONSULTANTS, INC.  
WWW.HOOPER-ARCH.COM  
POB 389 Platteville, CO 80116  
303.646.6279 Ph 720.333.9941 fx

DATE: 02/03/2011  
JOB NO: 10.56  
DRAWN BY: RH  
APPROVED: \_\_\_\_\_  
CADD FILE: \_\_\_\_\_

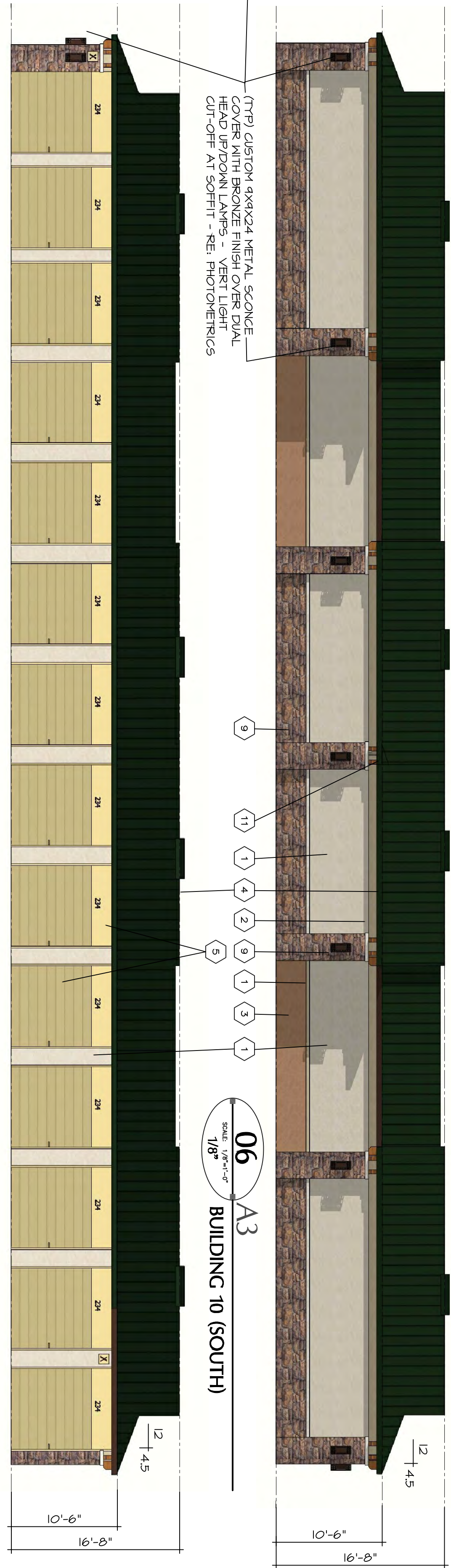
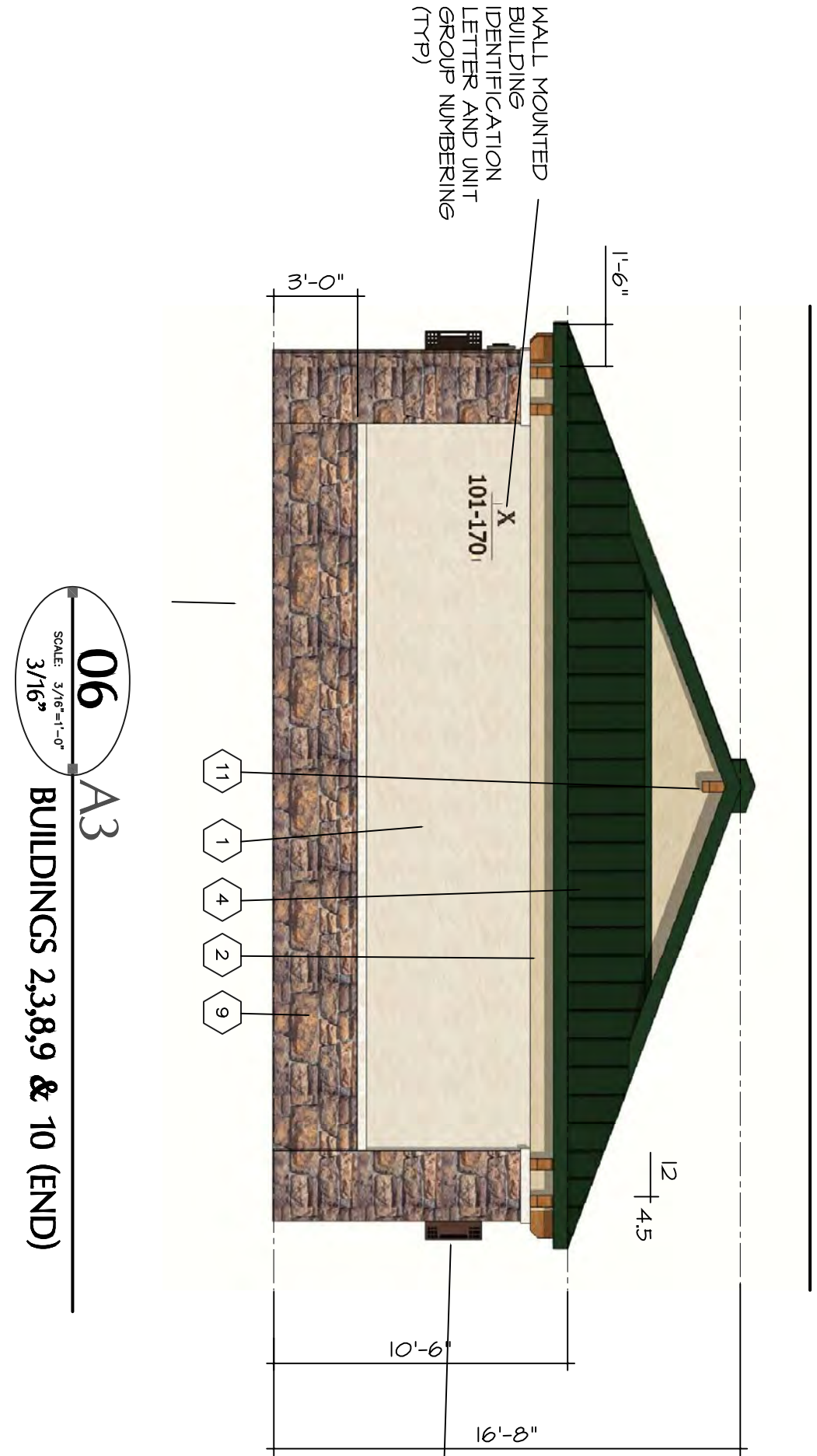
A2



# MURPHY CREEK COMMERCIAL FILING NO.1

A PARCEL IN THE NORTHEAST QUARTER OF SECTION 24  
TOWNSHIP 4 SOUTH, RANGE 66 WEST, OF THE 6TH PRINCIPAL MERIDIAN  
CITY OF AURORA, COUNTY OF ARAPAHOE, STATE OF COLORADO

## ARCHITECTURAL ELEVATIONS



BY	DATE	REVISION	NO.

## MURPHY CREEK COMMERCIAL FILING NO. 1

### ARCHITECTURAL ELEVATIONS

DEVELOPER  
MURPHY CREEK STORAGE, LLC.  
30 CHERRY HILLS FARM DRIVE  
ENGLEWOOD, CO 80110  
303-761-3667  
303-762-0390 (FAX)  
CONTACT: HARVEY ALPERT

Peak  
architectural  
consultants  
200 W. HAMDEN AVE., SUITE 200  
ENGLEWOOD, COLORADO 80110  
PH: 720.855.3869  
FAX: 720.855.3860  
CONTACT: JEFF FRENCH

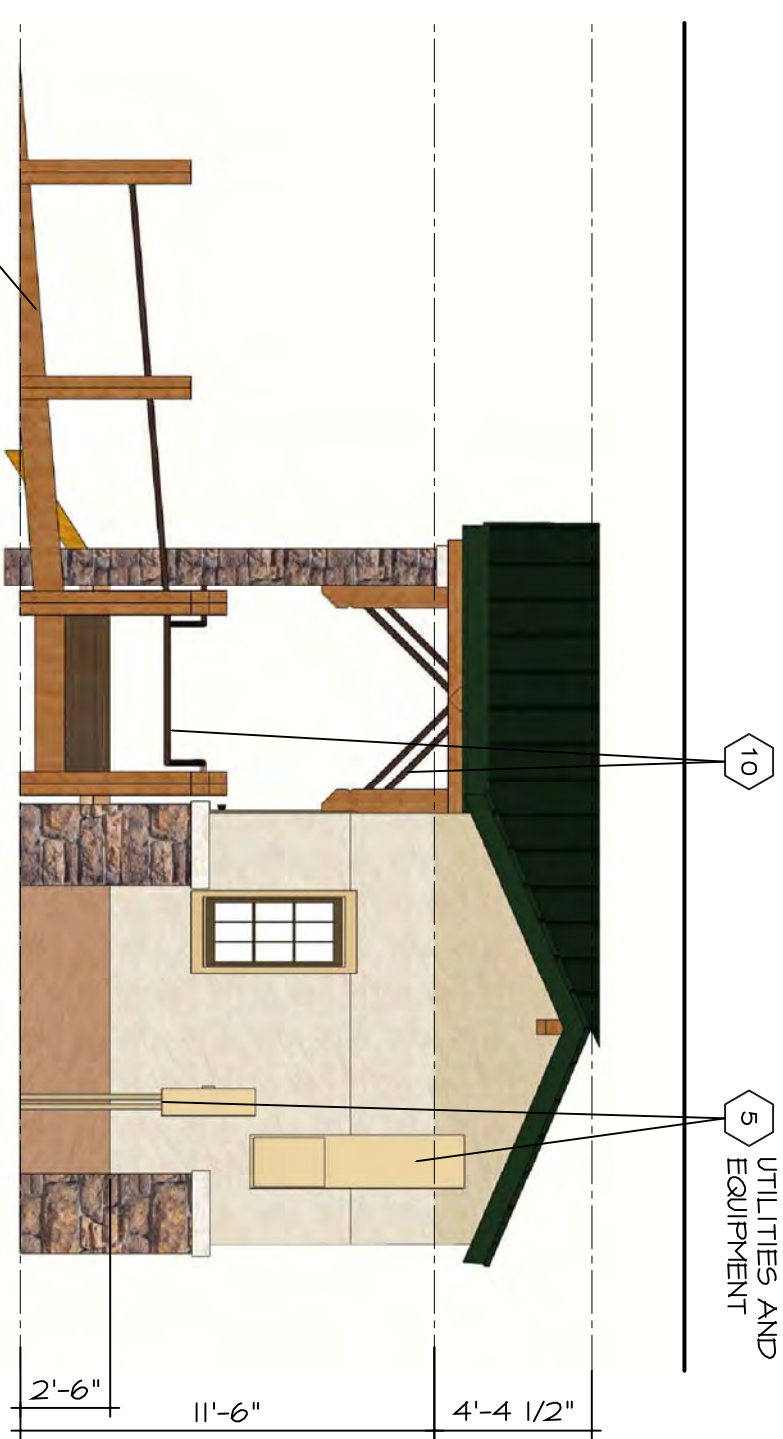
HOOPER ARCHITECTURAL  
DESIGN CONSULTANTS, INC.  
www.hooperinc.com  
POB 389 Frankton, Co. 80116  
303.646.2279 FR 720.333.9941 FR

DATE: 02/03/2011  
JOB NO: 10.68  
DRAWN BY: RH  
APPROVED: \_\_\_\_\_  
CADD FILE: \_\_\_\_\_  
A3

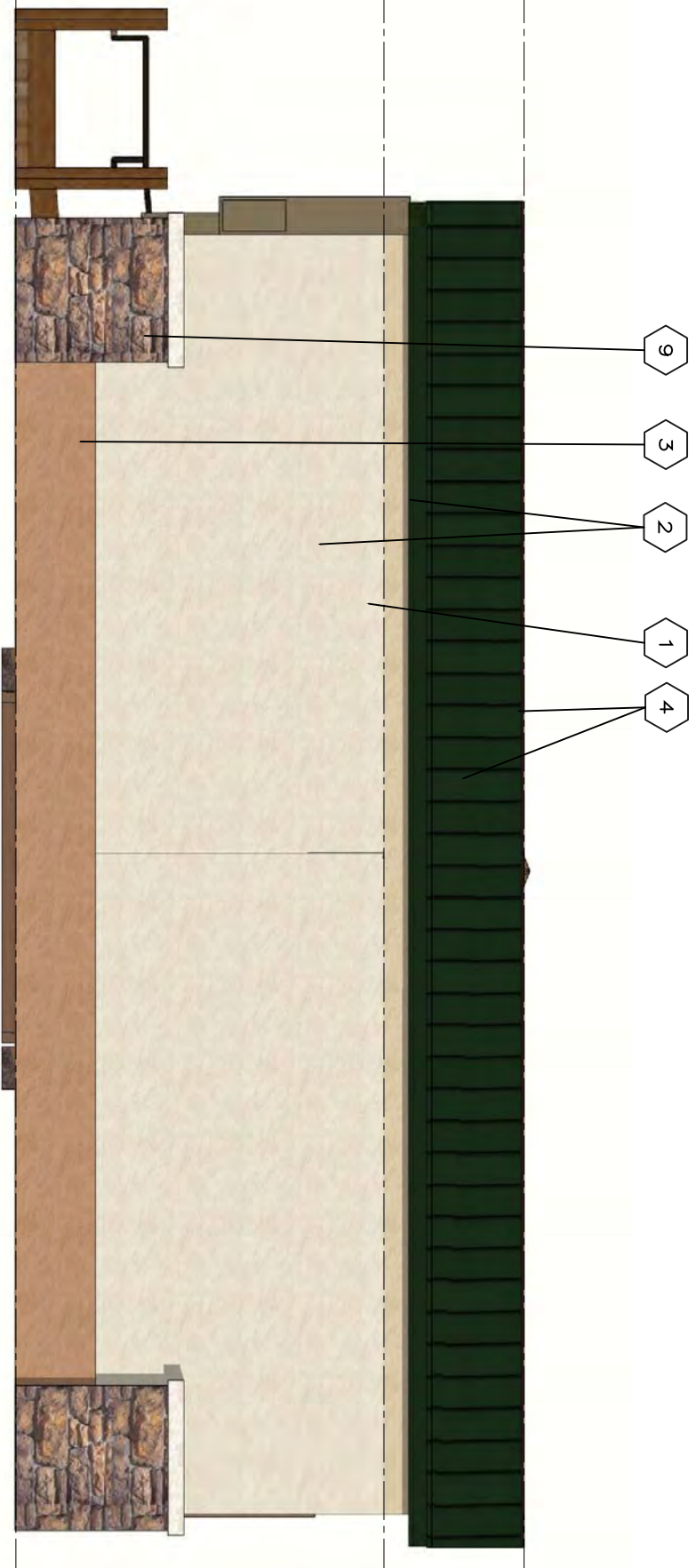


MURPHY CREEK COMMERCIAL FILING NO.1

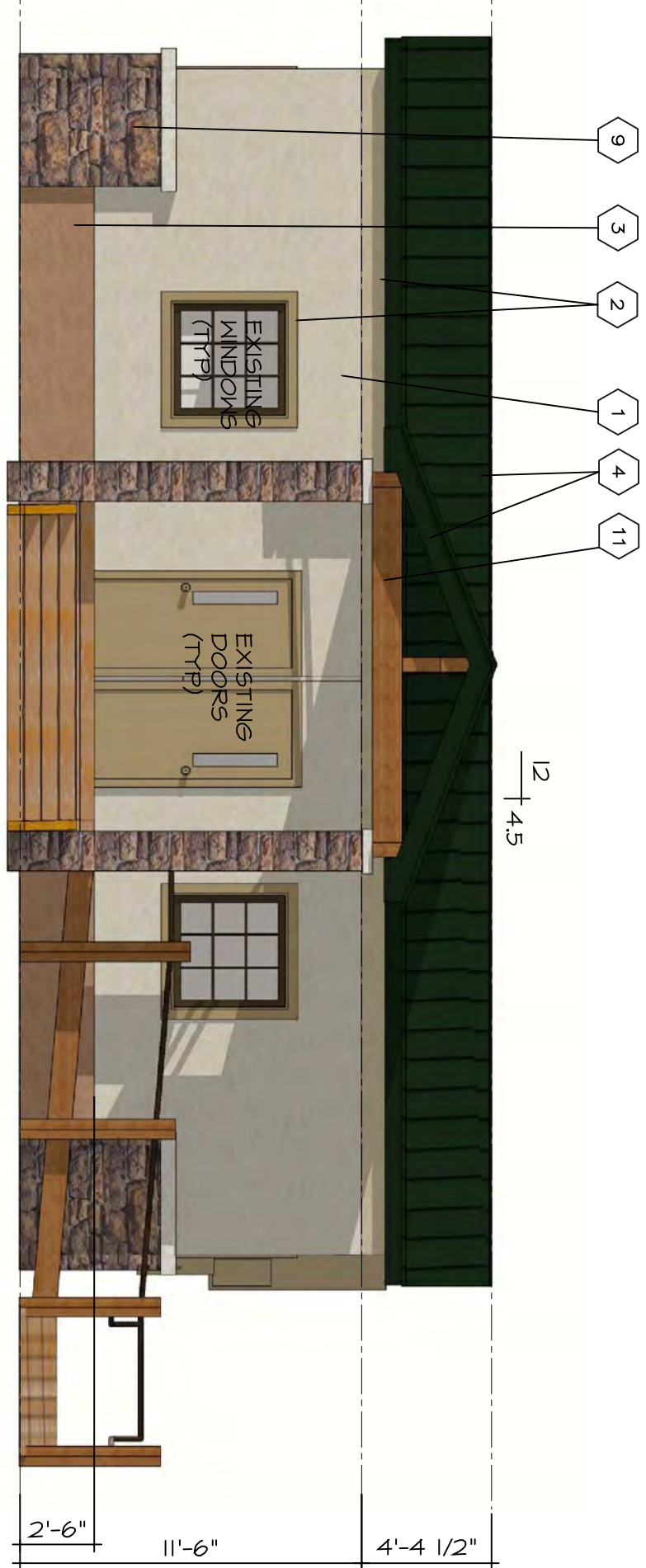
A PARCEL IN THE NORTHEAST QUARTER OF SECTION 24  
TOWNSHIP 4 SOUTH, RANGE 66 WEST, OF THE 6TH PRINCIPAL MERIDIAN  
CITY OF AURORA, COUNTY OF ARAPAHOE, STATE OF COLORADO  
ARCHITECTURAL ELEVATIONS



09 A4  
SCALE: 3/8"=1'-0"  
3/16" RV STORAGE SALES (WEST)

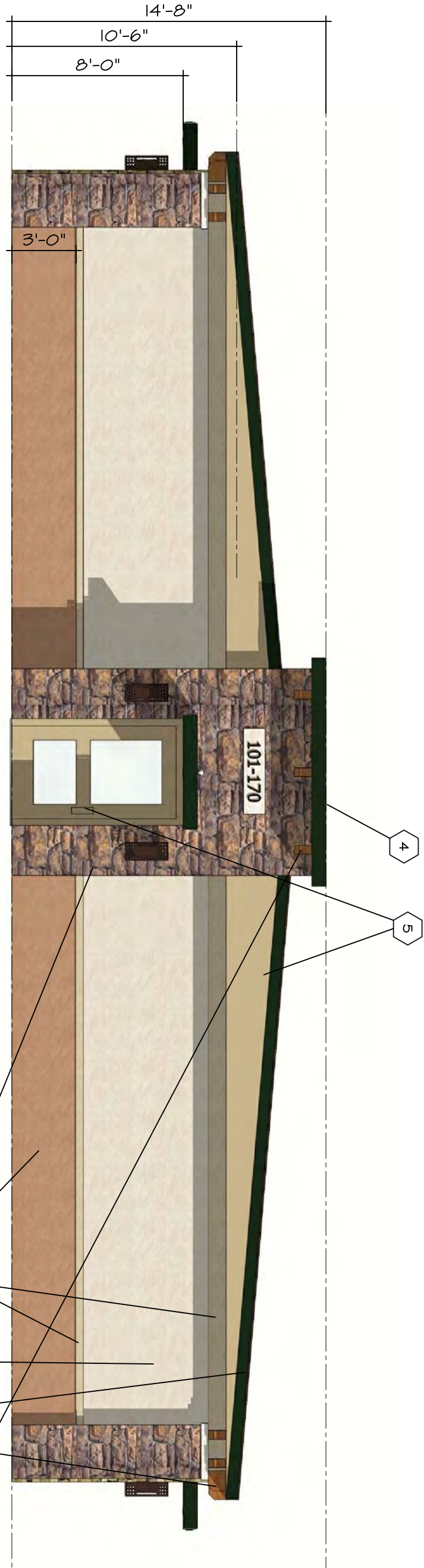


07 A4  
SCALE: 3/8"=1'-0"  
3/16" RV STORAGE SALES (NORTH)

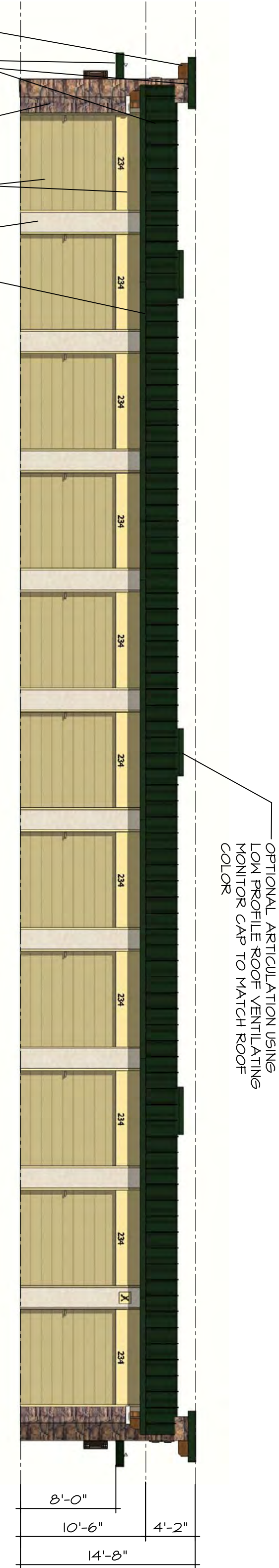


03 A4  
SCALE: 3/8"=1'-0"  
3/16" RV STORAGE SALES (SOUTH)

DESIGN INTENT: RE-FINISH EXISTING JOBSITE TRAILER  
USING MATERIALS SELECTED FOR THE GENERAL PROJECT.  
PROVIDE SLOPED ROOF CAP, ACCESSIBLE STAIRS / RAMP,  
PROVIDE SLOPED ROOF CAP AND FINISH FOR UNIFORM AND  
COMPLETED APPEARANCE.

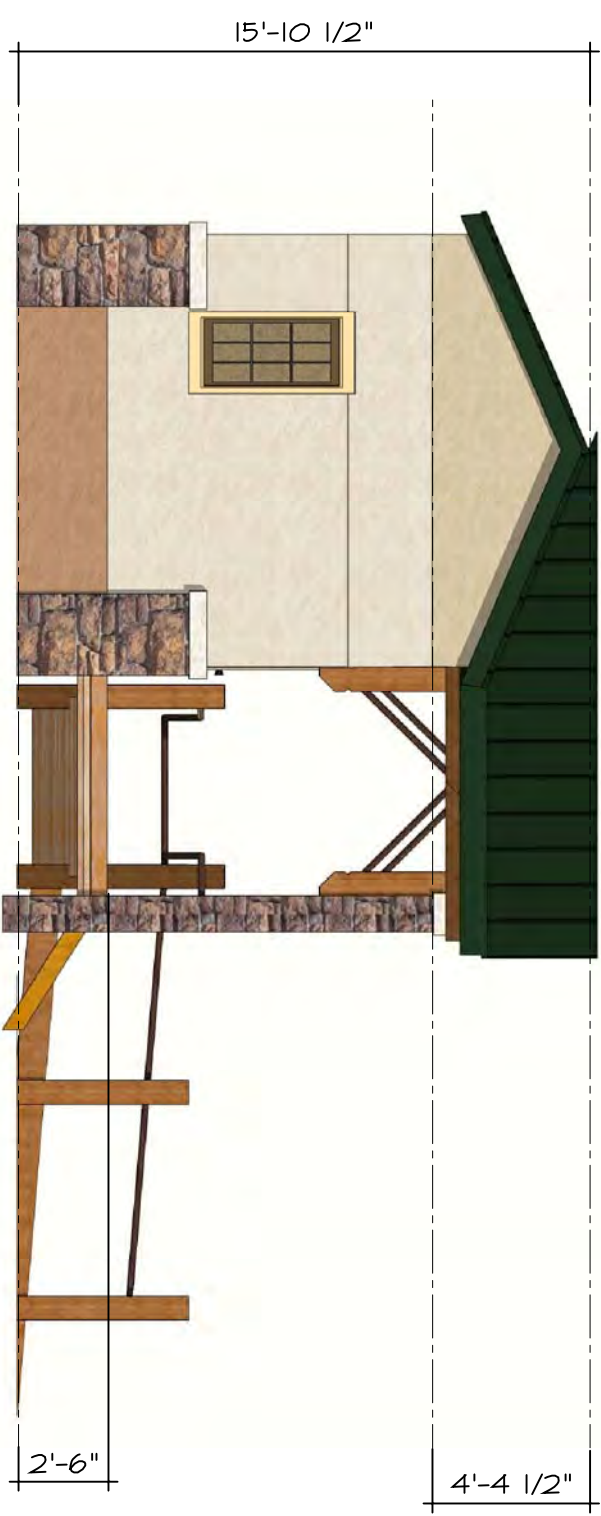


06 A4  
SCALE: 3/8"=1'-0"  
3/16" BUILDINGS 4,5,6,7 (END)

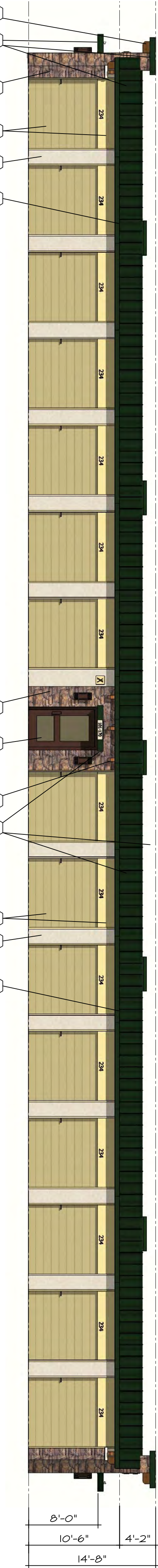


02 A4  
SCALE: 3/8"=1'-0"  
1/8" BUILDINGS 4 AND 7 (SIDE)

OPTIONAL ARTICULATION USING  
LOW PROFILE ROOF VENTILATING  
MONOPR CAP TO MATCH ROOF  
COLOR



09 A4  
SCALE: 3/8"=1'-0"  
3/16" RV STORAGE SALES (WEST)



01 A4  
SCALE: 1/8"=1'-0"  
1/8" BUILDINGS 5 AND 6 (SIDE)

NO.	REVISION	DATE	BY

MURPHY CREEK COMMERCIAL  
FILING NO. 1  
ARCHITECTURAL  
ELEVATIONS

DEVELOPER:  
MURPHY CREEK STORAGE, LLC.  
30 CHERRY HILLS FARM DRIVE  
ENGLEWOOD, CO 80110  
303-761-5667  
303-762-0390 (FAX)  
CONTACT: HARVEY ALPERT

Peak  
and Consultants  
200 W. HAMDEN AVE., SUITE 200  
ENGLEWOOD, COLORADO 80110  
PH: 720.855.3869  
FAX: 720.855.3869  
CONTACT: DEB FRENCH

HOOPER ARCHITECTURAL  
DESIGN CONSULTANTS, INC.  
www.hooper.com  
POB 389 Frankton, Co. 80716  
303.646.0279 Ph 720.233.9941 fx

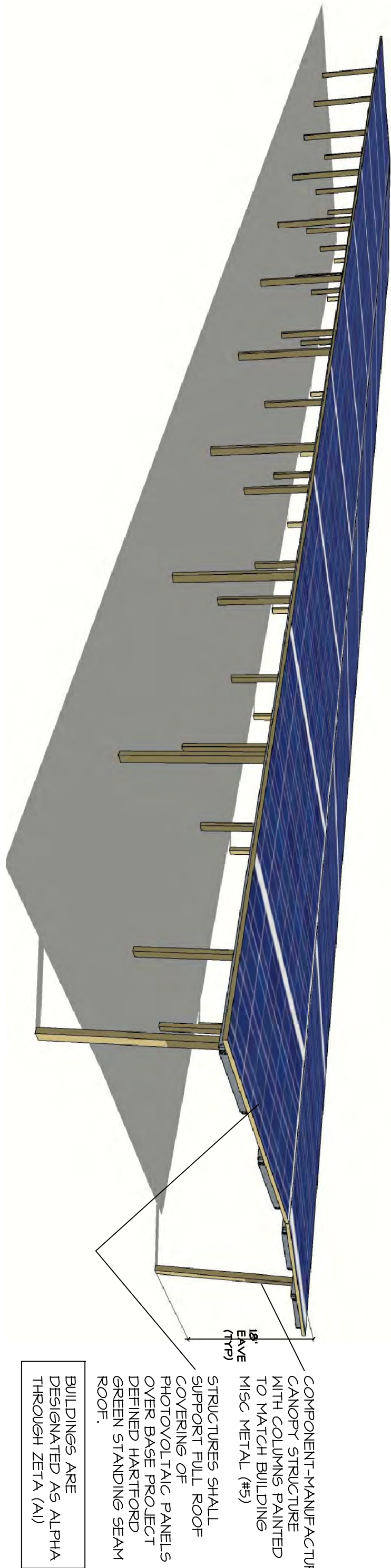
DATE: 02/03/2011  
JOB NO.: 10.58  
DRAWN BY: RH  
APPROVED: \_\_\_\_\_  
CADD FILE: \_\_\_\_\_

A4



# MURPHY CREEK COMMERCIAL FILING NO.1

A PARCEL IN THE NORTHEAST QUARTER OF SECTION 24  
TOWNSHIP 4 SOUTH, RANGE 66 WEST, OF THE 6TH PRINCIPAL MERIDIAN  
CITY OF AURORA, COUNTY OF ARAPAHOE, STATE OF COLORADO  
ARCHITECTURAL ELEVATIONS

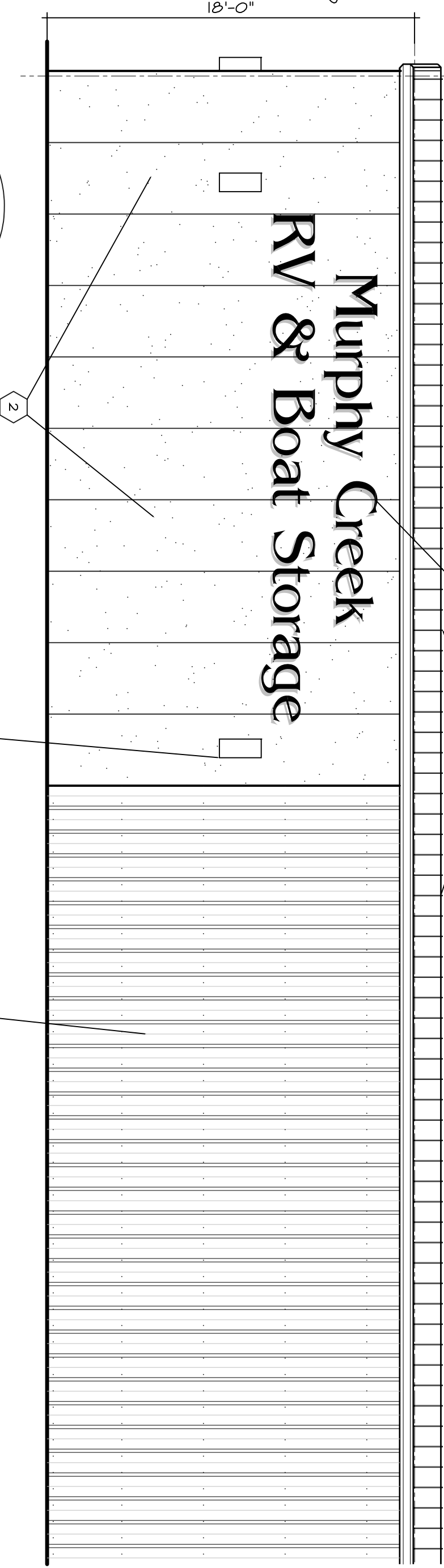


COMPONENT-MANUFACTURED CANOPY STRUCTURE WITH COLLUMS PAINTED TO MATCH BUILDING MISC. METAL (MS) STRUTTIRES SHALL SUPPORT FULL ROOF COVERING OF PHOTOVOLTAIC PANELS OVER BASE PROJECT THROUGH GREEN STANDING SEAM ROOF.

BUILDINGS ARE DESIGNATED AS ALPHA THROUGH ZETA (A-I)

9 A5  
RV INTERIOR (TYP) STORAGE  
CANOPY

03 A5  
RV STORAGE - ETA/ZETA END



REVERSE HALO ILLUMINATED CHANNEL LETTERING SIGN - PLACEMENT, SIZE AND COLOR SHALL BE AS ORDINANCE ALLOWS AND IS SUBJECT TO SIGN PERMIT APPROVAL

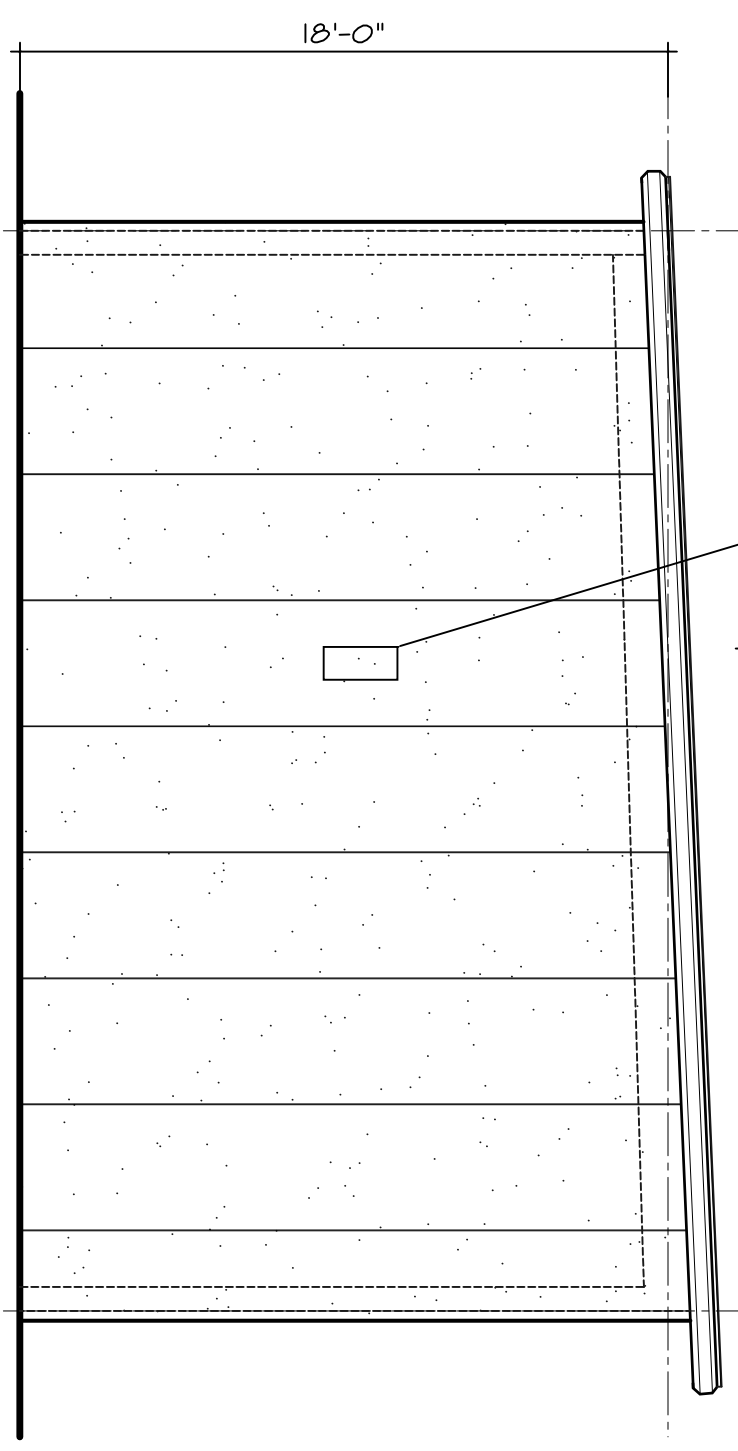
WITH POTENTIAL PHOTO-VOLTAIC ON TOP

PRE-FINISHED METAL "R" PANEL - COLORED "BROWNSTONE" 5' SHIN

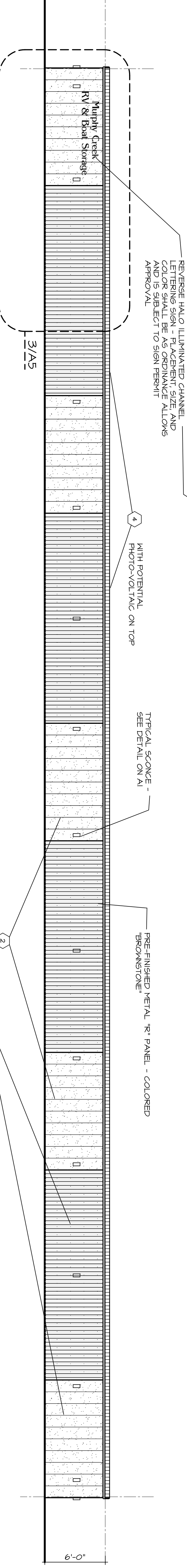
SCENCE SEE DETAIL ON A1

1/2 12

02 A5  
RV STORAGE - ETA/ZETA END



08 A5  
RV STORAGE - ETA/ZETA NW



REVERSE HALO ILLUMINATED CHANNEL LETTERING SIGN - PLACEMENT, SIZE AND COLOR SHALL BE AS ORDINANCE ALLOWS AND IS SUBJECT TO SIGN PERMIT APPROVAL

WITH POTENTIAL PHOTO-VOLTAIC ON TOP

PRE-FINISHED METAL "R" PANEL - COLORED "BROWNSTONE"

SCENCE SEE DETAIL ON A1

CANOPIES, ETA AND ZETA (RE A-I) ARE PROVIDED WITH ALTERNATING EXTENTS OF INSULATED PANEL (20' TYPICAL) AND BROWNSTONE METAL "R" PANEL (40' TYPICAL) - SEE A1 KEY PLAN FOR APPROXIMATE

01 A5  
ETA / ZETA (SIN) STREET  
FACING ELEVATION

## MURPHY CREEK COMMERCIAL FILING NO. 1 ARCHITECTURAL ELEVATIONS

DEVELOPER  
MURPHY CREEK STORAGE, LLC.  
30 CHERRY HILLS FARM DRIVE  
ENGLEWOOD, CO 80110  
303-761-3667  
303-762-0390 (FAX)  
CONTACT: HARVEY ALPERT

Peak  
and Consultants  
200 W. HAMDEN AVE., SUITE 200  
ENGLEWOOD, COLORADO 80110  
PH: 720.855.3869  
FAX: 720.855.3868  
CONTACT: JEFF TRENBACH

HOOPER ARCHITECTURAL  
DESIGN CONSULTANTS, INC.  
www.hooperdc.com  
POB 389 Ft. Collins, Co. 80516  
303.646.6279 Ft. 720.333.9941 Ft.

DATE: 02/03/2011  
JOB NO.: 10.66  
DRAWN BY: RH  
APPROVED:  
CADD FILE:

A5

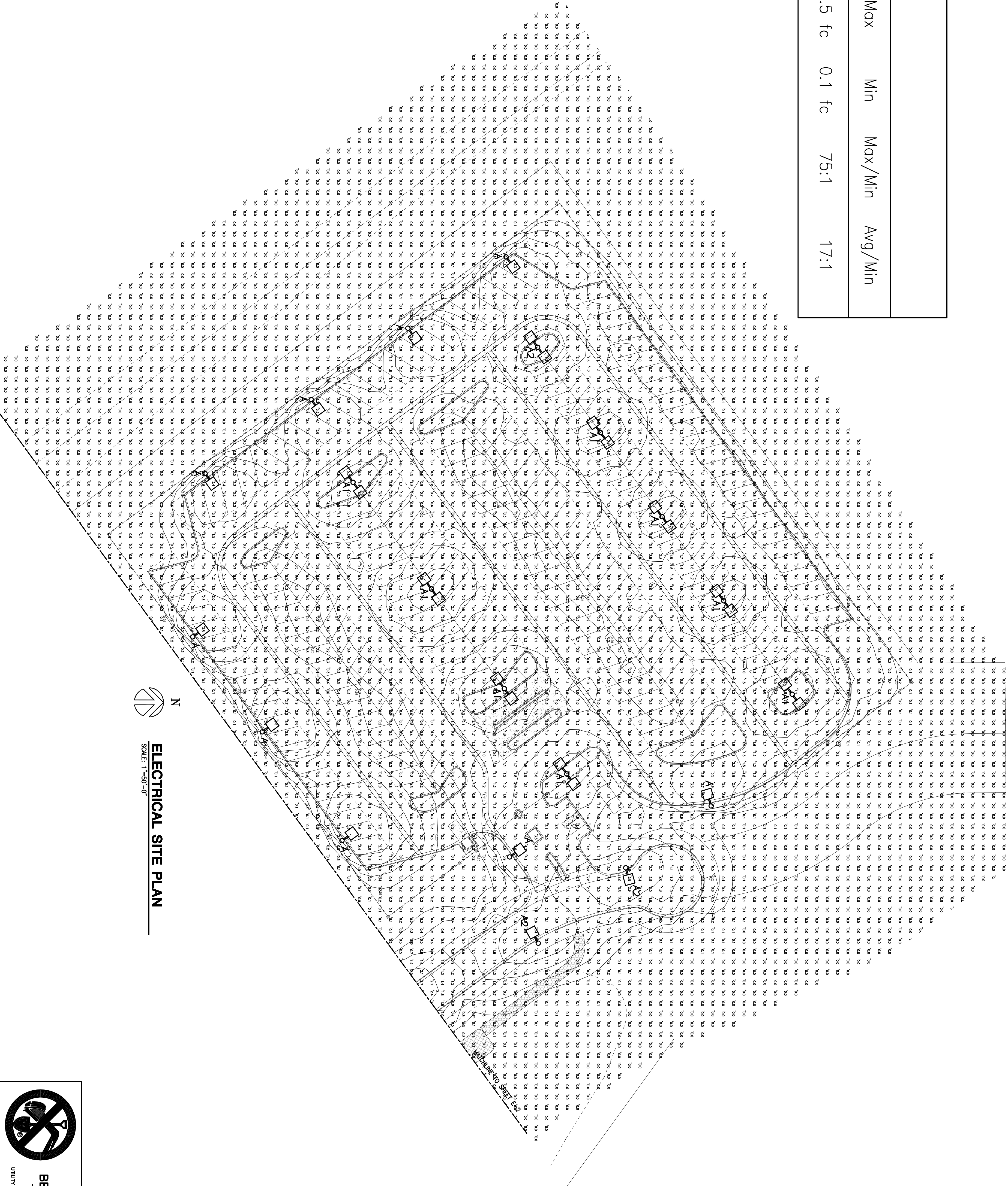
NO.	REVISION	DATE	BY



MURPHY CREEK COMMERCIAL FILING NO. 1

A PARCEL IN THE NORTHEAST QUARTER OF SECTION 24  
TOWNSHIP 4 SOUTH, RANGE 66 WEST, OF THE 6TH PRINCIPAL MERIDIAN  
CITY OF AURORA, COUNTY OF ARAPAHOE, STATE OF COLORADO  
PHOTOMETRICS PLAN

STATISTICS					
Description	Avg	Max	Min	Max/Min	Avg/Min
RV PARK	1.7 fc	7.5 fc	0.1 fc	75:1	17:1



BY	DATE	REVISION	NO.

MURPHY CREEK COMMERCIAL  
FILING NO. 1  
SITE PLAN  
SHEET DESCRIPTION

**DEVELOPER**  
MURPHY CREEK STORAGE, LLC.  
30 CHERRY HILLS FARM DRIVE  
ENGLEWOOD, CO 80110  
303-761-3667  
303-762-0390 (FAX)  
CONTACT: HARVEY ALPERT

**CALL UNCC**  
TWO WORKING DAYS  
BEFORE YOU DIG  
1-800-922-1987  
METRO DENVER AREA  
UTILITY INFORMATION CENTER OF COLORADO

**DATE:** 03/03/2011  
**JOB NO.:** 11046  
**DRAWN BY:** JTG  
**APPROVED:** SIS  
**CADD FILE:** 11046 E-1.DWG  
**SHEET 1 OF XXX**

**Peak**  
Civil Consultants  
200 W. HAMPDEN AVE., SUITE 200  
ENGLEWOOD, COLORADO 80110  
PH: 720.855.3869  
FAX: 720.855.3869  
CONTACT: DEPT FRENCH

**COREY**  
Electrical Engineering Inc.  
7822 S. Wadsworth Ct. Suite B  
Englewood, Colorado 80112  
PH: 303.762.0390  
FAX: 303.762.0390







A PARCEL IN THE NORTHEAST QUARTER OF SECTION 24  
TOWNSHIP 4 SOUTH, RANGE 66 WEST, OF THE 6TH PRINCIPAL MERIDIAN  
CITY OF AURORA, COUNTY OF ARAPAHOE, STATE OF COLORADO

**PHOTOMETRICS PLAN**

Canal #	MP-CS-150-MT-C73	Type	C
Project	Murphy Creek	Date	
Comments	Canopy		
Prepared by	JTG	03-02-11	

**DESCRIPTION**  
The Lumark Canopy Light combines lasting durability and excellent photometrics. USA certified for wet locations, The Canopy Light mounts quickly to a variety of surfaces, making it ideal for covered walkways, convenience store/service station canopies and enclosed parking areas.

**⑤ COOPER LIGHTING - LUMARK®**

<p><b>COMPATIBILITY</b></p> <p>POSSIBLE: GSK® bonding is constructed of heavy-gauge aluminum. GSK bonding is chemically resistant to most solvents and fuels. Fully galvanized door frame seals out provides easy access for maintenance and retrimming and can be removed to simplify installation.</p>	<p><b>FLAME-RET</b></p> <p>BALLOK® high power factor ballast construction is tested for ULG with Class II retraction. ULG construction is listed for 25°C ambient environment.</p>	<p><b>FINISH</b></p> <p>Weather and abrasion-resistant white polyester powder coat finish.</p>
--	--	--



**CLCS**  
**CANOPY LIGHT**  
100 - 400W  
High Pressure Sodium  
Pulse Start Metal Halide  
Metal Halide  
**CANOPY LUMINAIRE**

**TECHNICAL DATA**  
UL Wet Location Listed  
CSA Certified  
EISA Compliant ®

**ENERGY DATA**  
Reactor Ballast Input &  
100W HPS HgF (118 Watts)  
100W MIP HgF (126 Watts)  
150W HPS HgF (175 Watts)

Reactor Ballast Input  
100W HPS HEP (118 Watts)  
100W MIP HEP (128 Watts)  
150W HPS HEP (175 Watts)

100W HPS HPI (118 Watts)  
100W MIP HPI (128 Watts)  
150W HPS HPI (175 Watts)

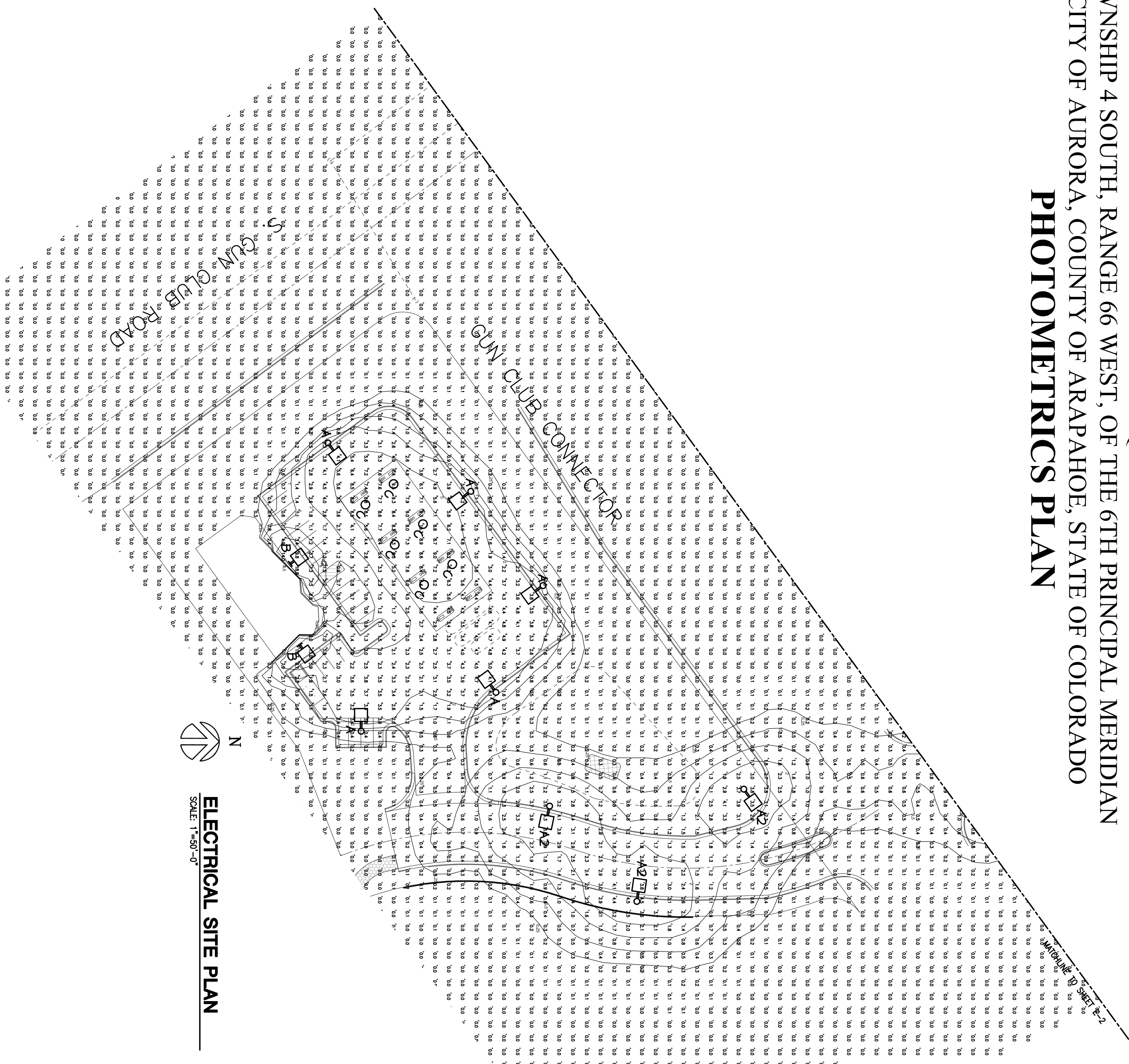
150W AIP HEP (185 Watts)  
CWI Ballast Input Watts

250W MH HPF (390 Watts)  
400W HPS HPF (465 Watts)  
400W MH HPF (475 Watts)

175W AMH HPF (210 Watts)  
200W HPS HPF (250 Watts)  
200W M/P HPF (227 Watts)

400W HPS HPI (465 Watts)  
400W MH HPI (455 Watts)  
400W MP HPI (452 Watts)

**Approximate Net Weight**  
44 lbs. (20 kgs.)

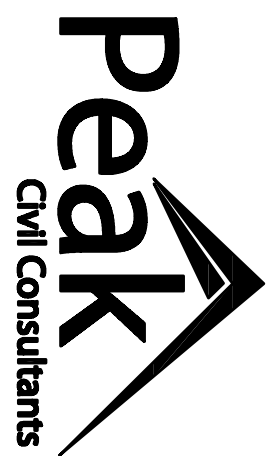
ADHOC62287 p  
2010-09-20 16:32:22

## ELECTRICAL SITE PLAN

 $\mathbb{N}$ [illegible]

MURPHY CREEK COMMERCIAL  
FILING NO. 1  
SITE PLAN  
SHEET DESCRIPTION

DEVELOPER  
MURPHY CREEK STORAGE, LLC  
30 CHERRY HILLS FARM DRIVE  
ENGLEWOOD, CO 80110  
303-761-3667  
303-762-0390 (FAX)  
CONTACT: HARVEY ALPERT



200 W. HAMPDEN AVE., SUITE 200  
ENGLEWOOD, COLORADO 80110  
PH: 720.855.3859  
FAX: 720.855.3860  
CONTACT: JEFF FRENCH



**Electrical Engineering Inc.**  
7822 S. Wheeling Ct. Suite B  
Englewood, Colorado 80112  
projects@ccoreveg.com  
Phone (303) 696-1257  
Fax (303) 696-1459

DATE: 03/03/2011  
JOB NO: 11046

APPROVED: SLS  
CADD FILE: 11046 E-3.DWG

E-3  
SHEET 3 OF XX



**CALL UNCC**  
TWO WORKING DAYS  
**BEFORE YOU DIG**  
**1-800-922-1987**  
METRO DENVER AREA  
UTILITY NOTIFICATION CENTER OF COLORADO

E-3  
SHEET 3 OF XX



BY

REVISION	DATE

NO. \_\_\_\_\_

Type	A
Catalog #	HPT-R-SL-250-MT
Project	Murphy Creek
Comments	
Prepared by	JTG
	03-02-11

The Lumark Tribute is the most versatile, functionally designed, universally adaptable outdoor luminaire available. The Tribute brings outstanding performance to walkways, parking lots, roadways, loading docks, building areas, and any security lighting application. U.L. listed and CSA certified for wet locations.

### **SPECIFICATION FEATURES**

<p><b>Construction</b></p> <p>Forged one-piece die-cast aluminum housing and door frame. One-piece silicone gasket protects the optical chamber from performance degrading contaminants. One (1) stainless spring latch and two (2) stainless hinges allow toolless opening and removal of door frame.</p>	<p>field rotatable in 30° increments and offered standard with mogul base lampholders for High Pressure Sodium and 200-400W Metal Halide assemblies or medium-base lampholders for Metal Halide 150W and below.</p>
<p><b>Electrical</b></p> <p>Balanced and isolated electrical</p>	

<p><b>Reflector</b> choice of nine (9) high efficiency optical distributions, including five (5) segmented optical systems constructed of premium 85% reflective, anodized aluminum sheet. Optical segments are rigidly mounted inside a thick gauge aluminum housing for superior</p>	<p>die-cast housing for optimal heat transfer and operating efficiency. Optional swing-down galvanized steel power tray with integral handle and quick disconnects allows tray to be completely removed from housing providing ample room for fixture installation and maintenance.</p>
--	---

protection. All segment faces are clean of rivet heads, tabs or other means of attachment which may cause streaking in the light distribution. Optical modules are

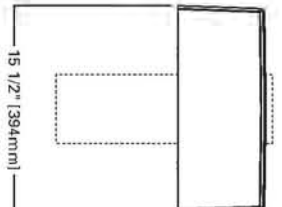
## TRIBUTE

**70 - 41**  
High Pressure Se  
ulise Start Metal P  
Metal P  
**AREA LUMIN**

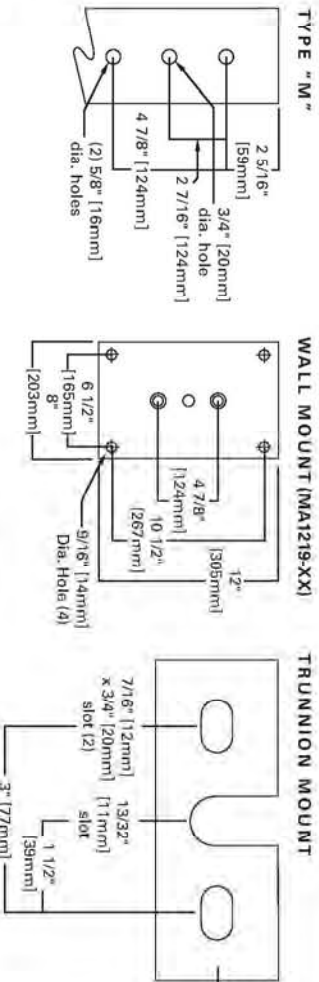
**70 - 400M**  
Pressure Sodium  
Start Metal Halid  
Metal Halid  
**AREA LUMINARIA**

**DARK SKY  
COMPLIANT** **FCO**  
Full Current

## DIMENSIONS



## DRILLING PATTERNS



**Specifications and Dimensions subject to change without notice.**

**COOPER Lighting**  
www.cooperlighting.com

ADH00232  
02/11/2011 5:16:50 PM

**Peak**  
Civil Consultants

200 W. HAMPDEN AVE., SUITE 200  
ENGLEWOOD, COLORADO 80110  
FAX: 720.865.3860  
PH: 720.865.3859

CONTACT: JEFF FRENCH

---

CONTACT: HARVEY ALPERT

303-761-3667  
303-762-0390 (FAX)

MURPHY CREEK COMMERCIAL  
FILING NO. 1  
SITE PLAN  
SHEET DESCRIPTION

DEVELOPER  
CREEK STOP

RY HILLS FA

503-761-36

CT: HARVEY



WOOD, COLORADO  
PH: 720.855.3888  
FAX: 720.855.3888  
CONTACT: JEFF FRIEDMAN

**FOR**  
Medical Engineering  
S. Wheeling Ct.  
Wood, Colorado  
jects@coreyeng  
one (303) 696-  
ax (303) 696-14

03/03/2019

$$\begin{array}{r} 11046 \\ \hline 0: \end{array}$$

010  
SIS

FILE: 11046

FIN

SHEET 3